

Interreg
Sudoe

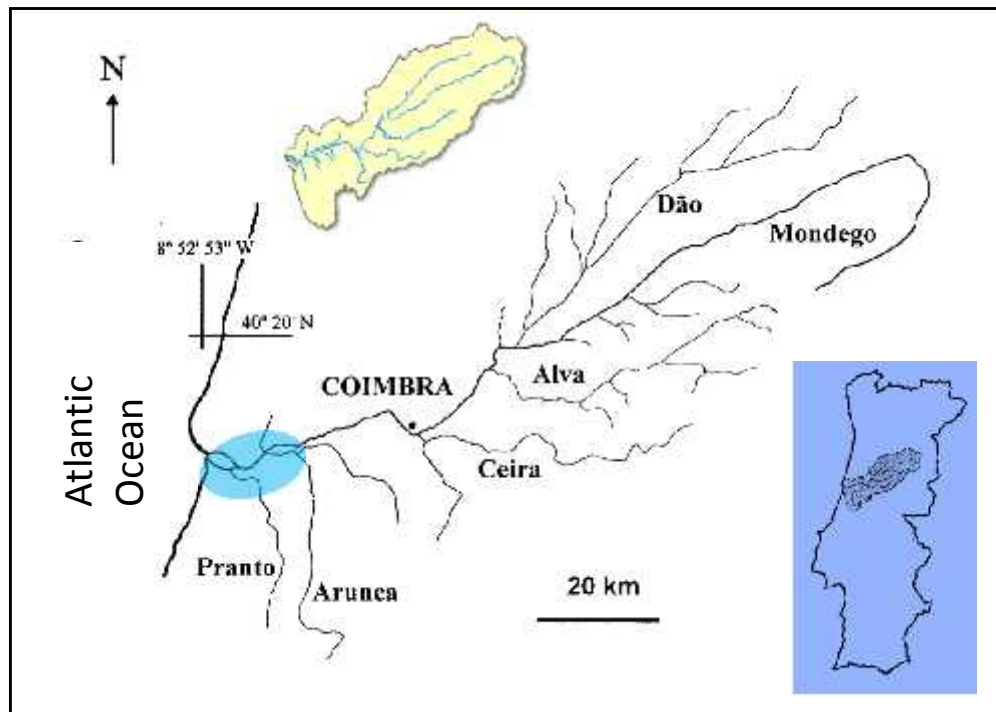


PILOT BASINS - River Mondego

Isabel Domingos
MARE/FCUL



The river basin



River length - 258 km

River basin area - 6 645 km²

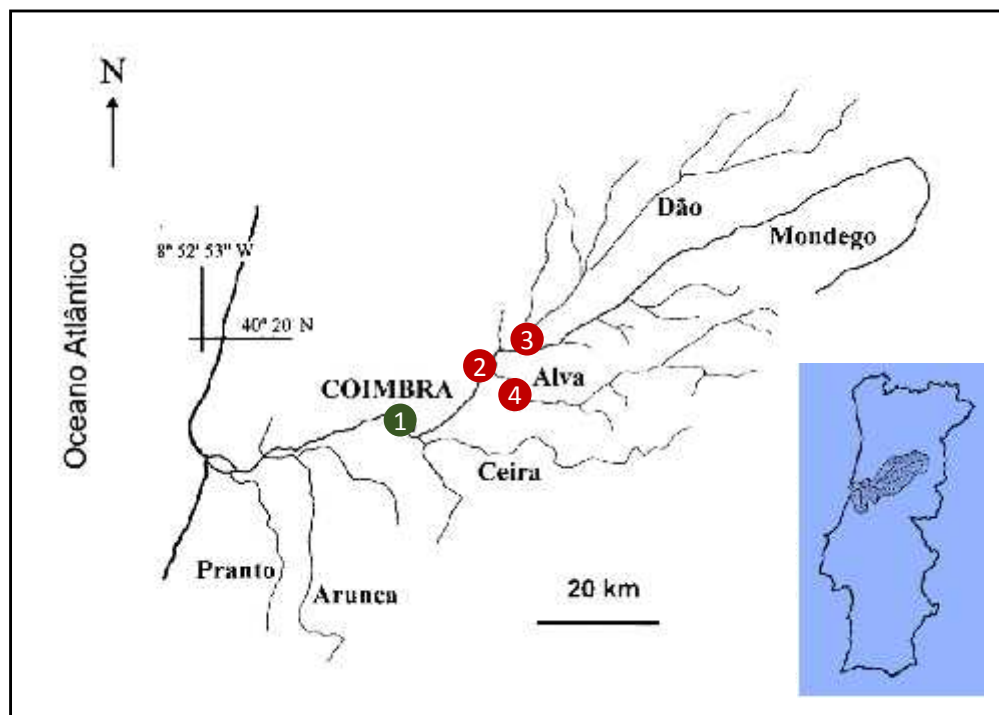
Several tributaries

- River Dão (92 km)
- River Alva (106 km)
- River Ceira (100 km)
- River Arunca (60 km)
- River Pranto (45 km)

Estuarine length

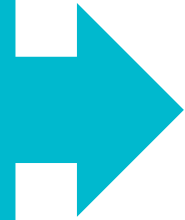
- 26 km (Summer)
- 16 km (Winter)

Obstacles to migration



Accessible area - 30%
of the main river

- 1 Coimbra Bridge weir (eel pass)
- 2 Raiva dam
- 3 Agueira dam
- 4 Erophas dam



Obstacles to migration



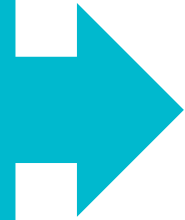
The eel fishery



	Estuary	River
Glass eels	NO	NO
Yellow eels	NO	YES
Silver eels	NO	NO

FISHING GEARS

	Estuary	River
Glass eels	-	-
Yellow eels	-	Fykenets
Silver eels	-	-



Other pressures on the eel



Glass eel poaching

Otter & Cormorant

Louisiana crayfish

Anguillicola

Eel Management Plan



- **National**

Measures applied at the national level

- Reduction of the fishing effort
- Establishment of a closed season (1 Oct – 31 Dec)
- Standardization of minimum catch size (22 cm)
- Reestablishment of the river *continuum*
- Ensure the downstream migration of silver eels

Monitoring



- What has been monitored

Recruitment

(Estuary & River / glass eels & elvers)

Standing stock

Silver eel escapement

- Monitoring started in 1990...but...

it was interrupted...

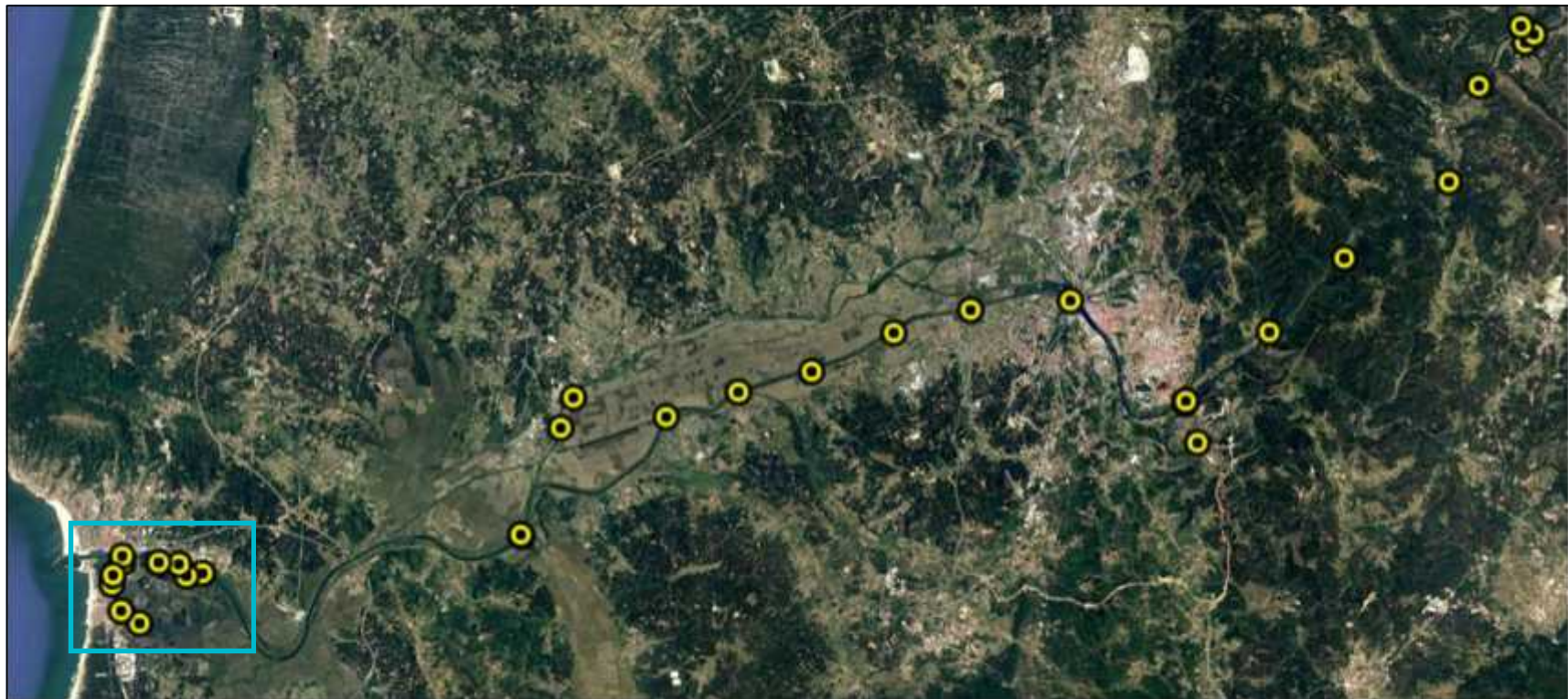
changed periodicity

changed parameters to be monitored...



EUMAP (2017-2019)

Monitoring



10 Estuary + 20 FW sites

Monitoring



- Main difficulties encountered

Lack of money

Lack of interest (economic importance)

Wide disperse fishermen community



Interreg
Sudoe



Project co-financed by the INTERREG SUDOE Programme
through the European Regional Development Fund (ERDF)

www.sudoang.eu