

Interreg
Sudoe



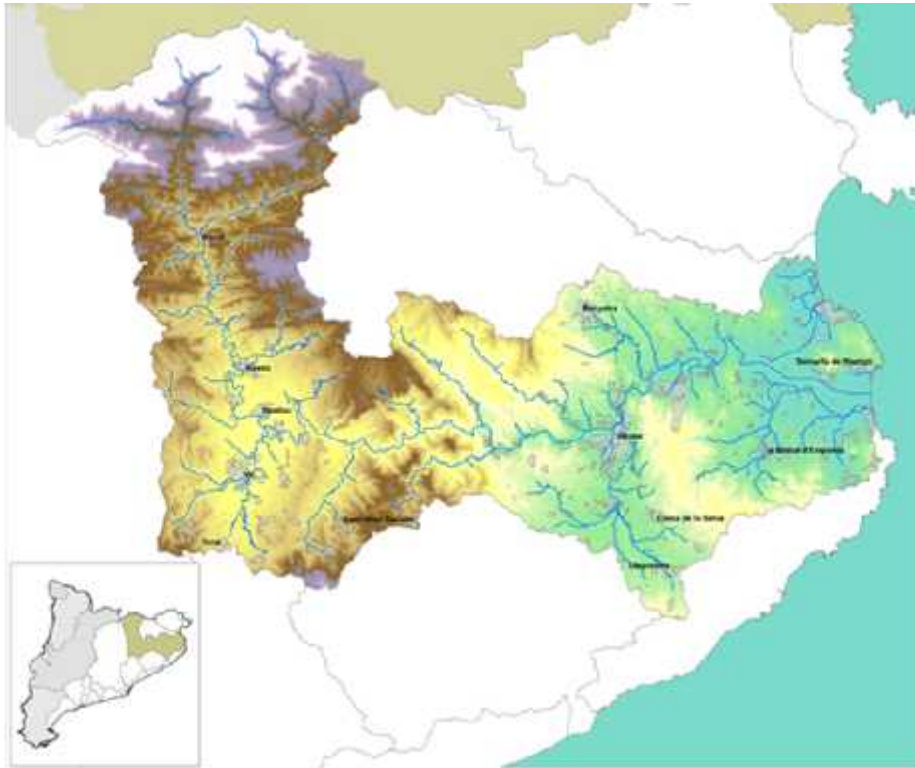
PILOT BASINS - River Ter

Lluís Zamora
IEA/UDG

Universitat de Girona
Institut d'Ecologia Aquàtica



The river basin



River length – 199,7 km

River basin area – 3.275 km²

Several tributaries

Downstream Dam

River Ritort

River Freses

River Rupit

River Major

River Gurri

Upstream Dams

River Daró

River Terri

River Onyar

River Llémena

River Brugent

Estuarine length

- 0,5 km

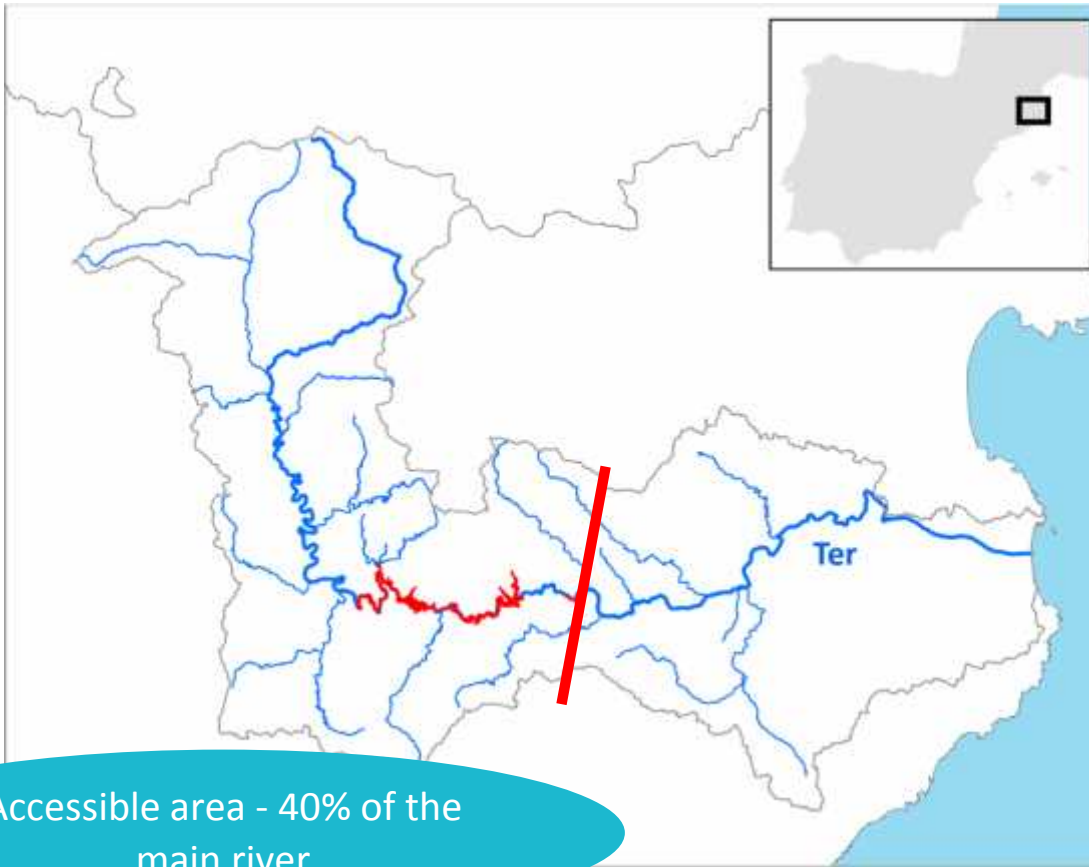
The river basin



The river basin



Obstacles to migration



Accessible area - 40% of the main river



Obstacles to migration



- 1 El Pasteral dam
- 2 Susqueda dam
- 3 Sau dam



Obstacles to migration

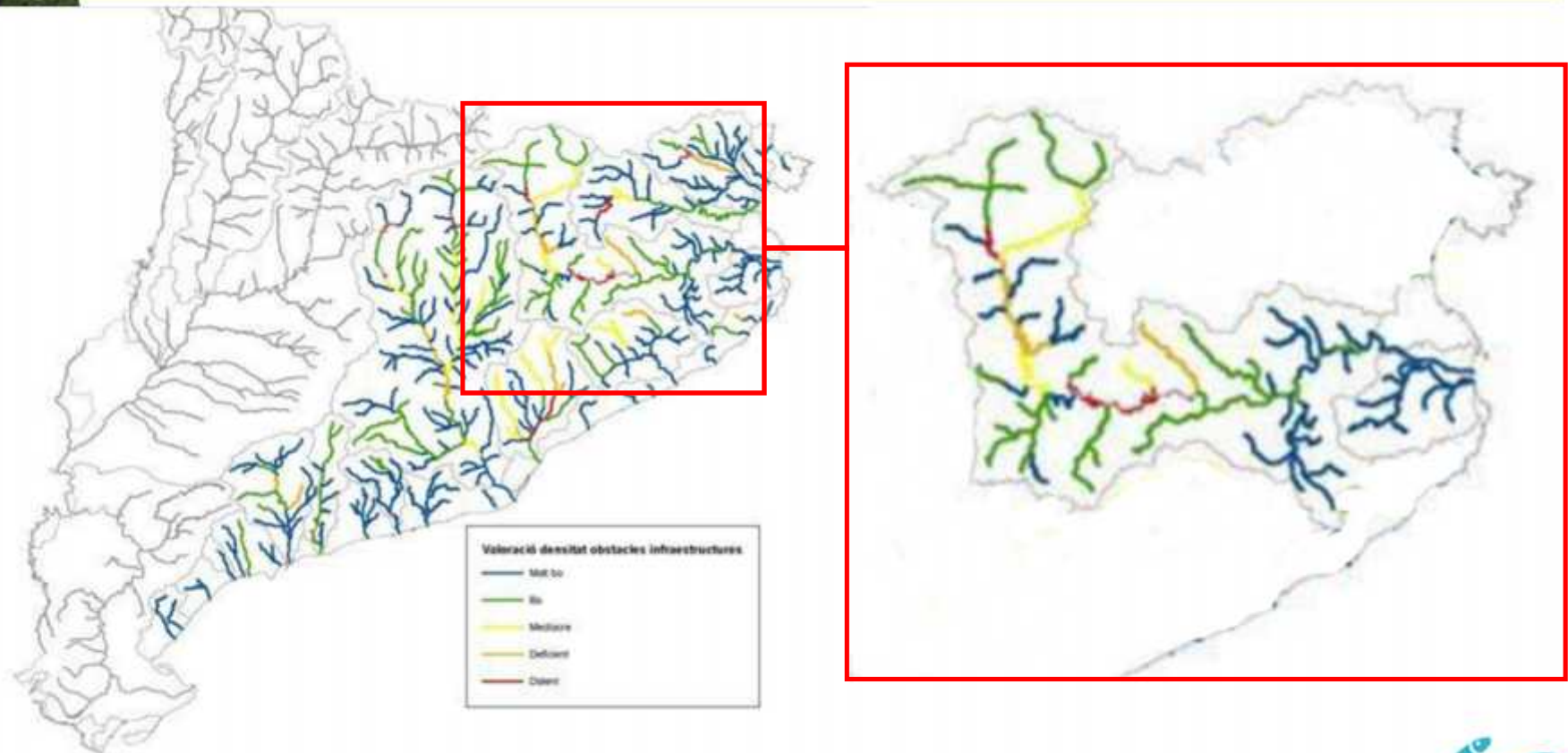
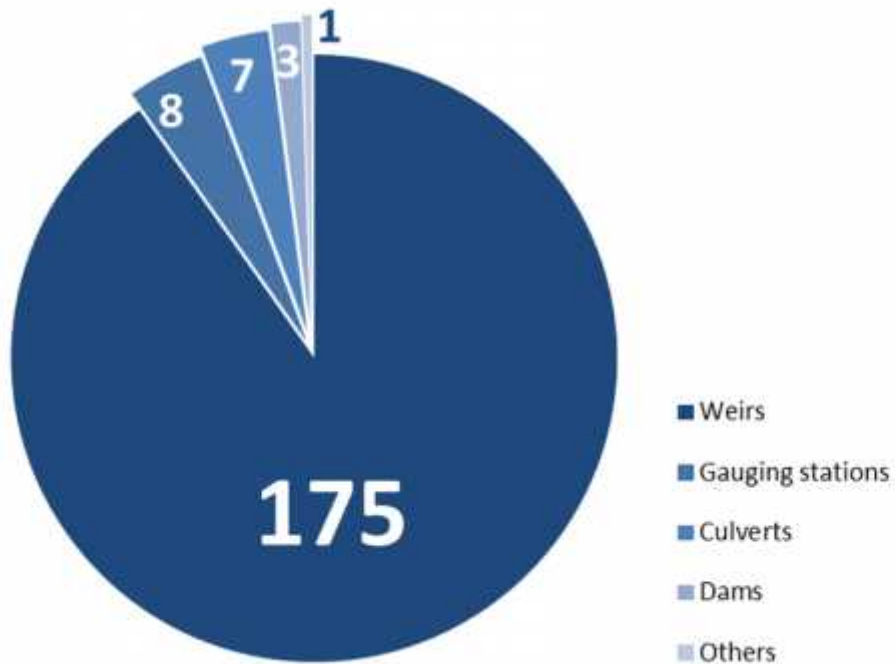


Figura 2: Mapa dels resultats d'avaluació de la continuïtat l'any 2017

Obstacles to migration



only 18,9%
passable
(all fish species)

The eel fishery

Yellow eels/Silver eels

- Only recreational
- >35 cm
- Catch and release



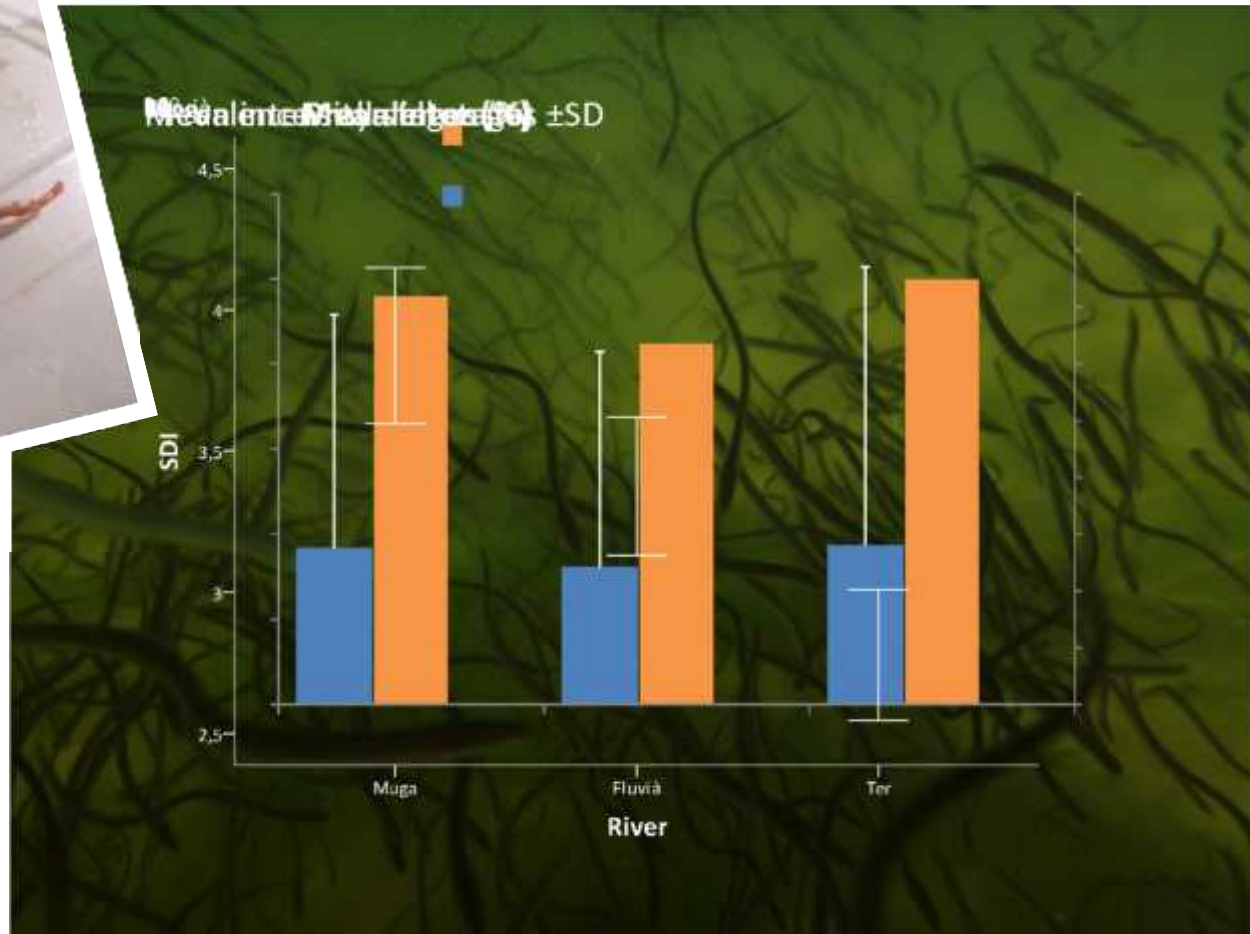
Glass eels

- Professional (from 1996)
- <12 cm
- 20ht October to 10th March
- Using fykenets
- 6 sites (1 trap/site)
- 5 fishermen (1/day)
- Around 100 kg/season

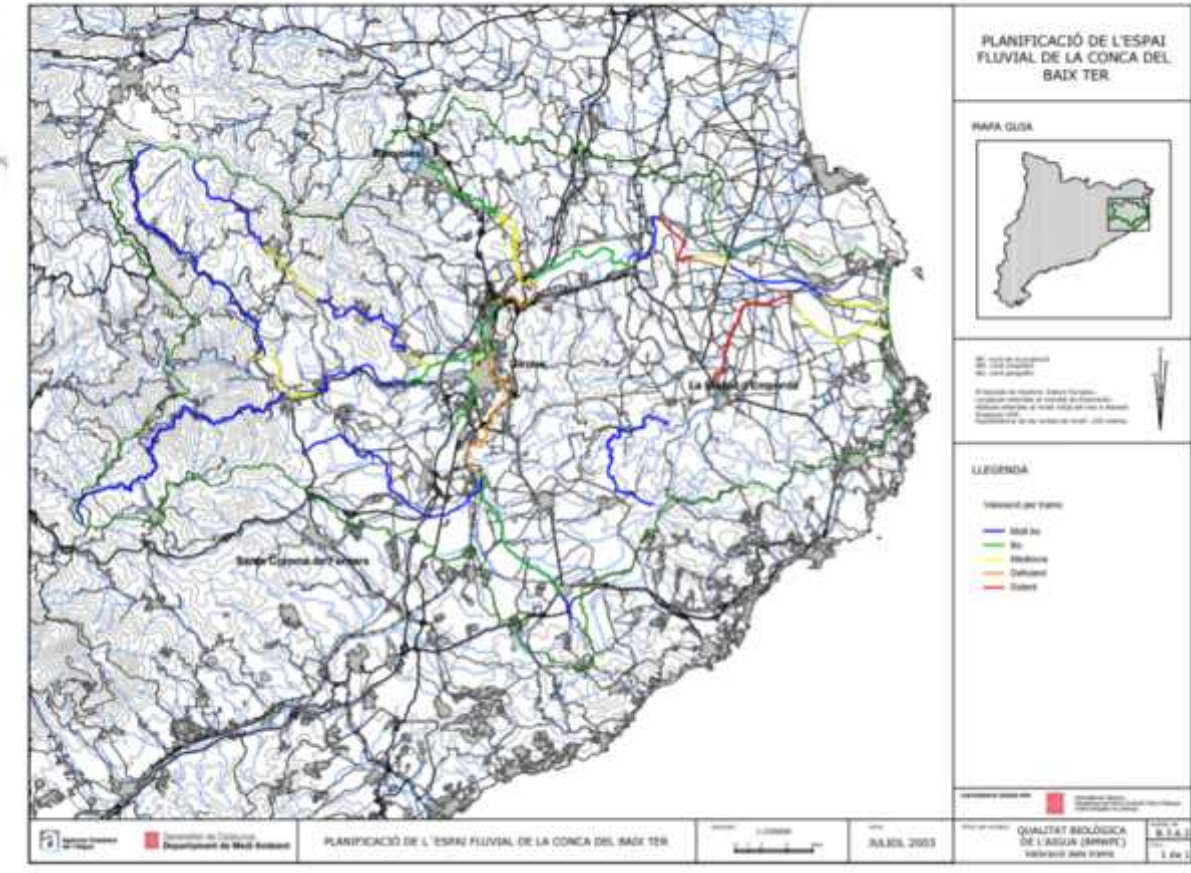


	Estuary	River
Glass eels	YES	NO
Yellow eels	NO	NO
Silver eels	NO	NO

Other pressures on the eel: parasites



Other pressures on the eel: pollution



Other pressures on the eel: predation and exotic fish species



*Lutra
lutra*



*Phalacrocorax
carbo*



Neovison vison (American

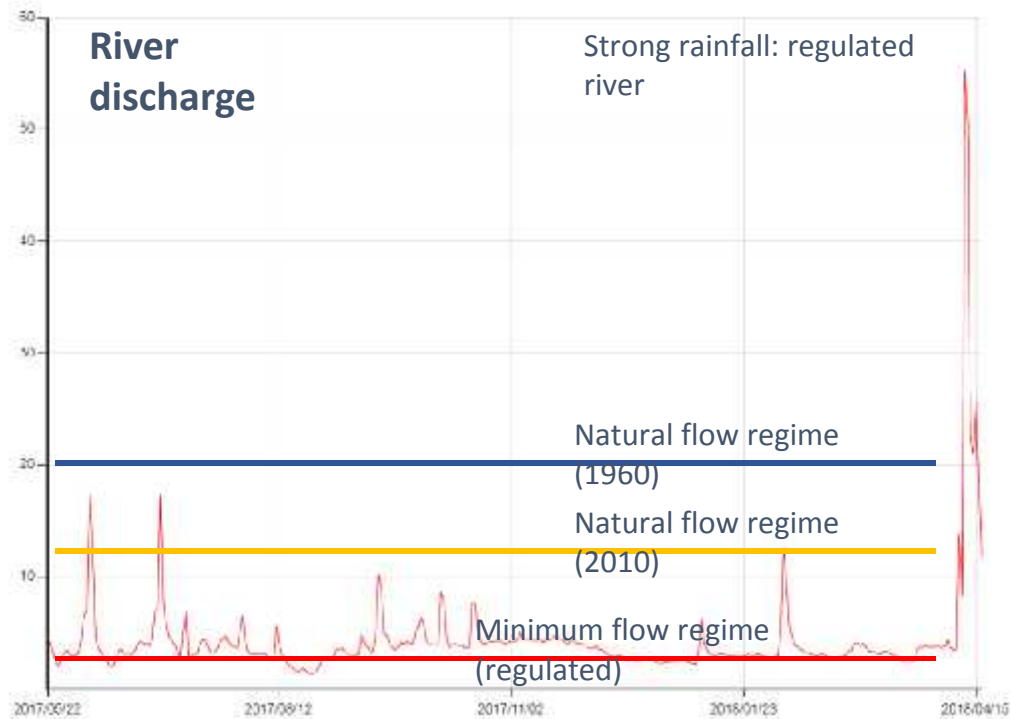


Silurus



Pseudorasbora parva

Other pressures on the eel: water abstraction



Other pressures on the eel: hydroelectric power plants

Taula 2: Resum de concessions d'aigües superficials del riu Ter (des de l'embassament de Pasteral).

Tipus d'ús	Nº concessions	Cabal (m³/s)	% Cabal Total
Abastament	3	7.23	3.10
Força motriu	1	1.39	0.60
Hidroelèctric	15	203.76	87.37
Hidroelèctric i reg	2	8.67	3.72
Industrial	5	4.21	1.80
Industrial i abastament	1	7.89	3.38
Reg	9	0.07	0.03
Total Ter	36	233.24	

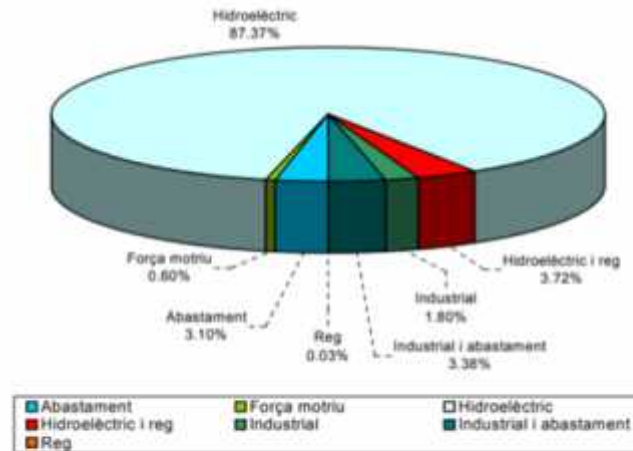


Figura 2: Resum de Concessions al Baix Ter

Taula 3: Titulars de concessions hidroelèctriques al riu Ter.

Titular Aprofitament Hidroelèctric	Localitat	Potència instal·lada (CV)
Aigües avall embassament de Pasteral		
Juncadella-Burés	Anglès	1200
Colònia Bonmati, Conjunt de fàbriques	Amer	1120
Central de Cadie		3000
S.A. Grober	Bescanó	725
Sèquia Monar		
Coma Cros	Bescanó	520
Manufacturas Antonio Gassol	Salt	250
Coma Cros	Salt	300
Indústries Mataró	Girona	250
S.A. Grober	Girona	30
Sala i Bertran	Girona	160
Ajuntament de Girona	Girona	200
Ajuntament de Girona	Girona	150
Ajuntament de Girona	Girona	100
Casas Mitjana	Girona	250
Francesc Mitjana	Sarrià de Ter	200
Sèquia Vinyals		
J. y F. Torres Hostench	Sarrià de Ter	300
Central Vinyals	Flassà	500
Sèquia de Santmenat		
Molí de Jafre de Ter	Jafre	96
Molí de Verges	Verges	180
Molí de Belcaire	Belcaire d'E.	120
Molí de l'Escala	L'Escala	50
Molí de Gualta	Gualta	210
Molí de Pals	Pals	120
Molí de Torroella de Montgri	Torroella de M.	60



Eel Management Plan

- Eel Management Plan
 - Regional (Catalunya)
 - Measures to be applied at the regional level
 - Fisheries regulation
 - **Fish stocking**
 - Increasing river connectivity and water quality
 - Predators control

Monitoring

- What has been monitored?
 - Recruitment (2015-2016)
 - Standing stock
 - Silver eel escapement
- ACA - Monitoring started in 2010
 - every 6 years
 - not specific for eels / electrofishing
 - many teams/poor homogenization
 - lack of money/who is in charge at the Catalan administration?



Interreg
Sudoe



Project co-financed by the INTERREG SUDOE Programme
through the European Regional Development Fund (ERDF)

www.sudoang.eu