

Interreg
Sudoe



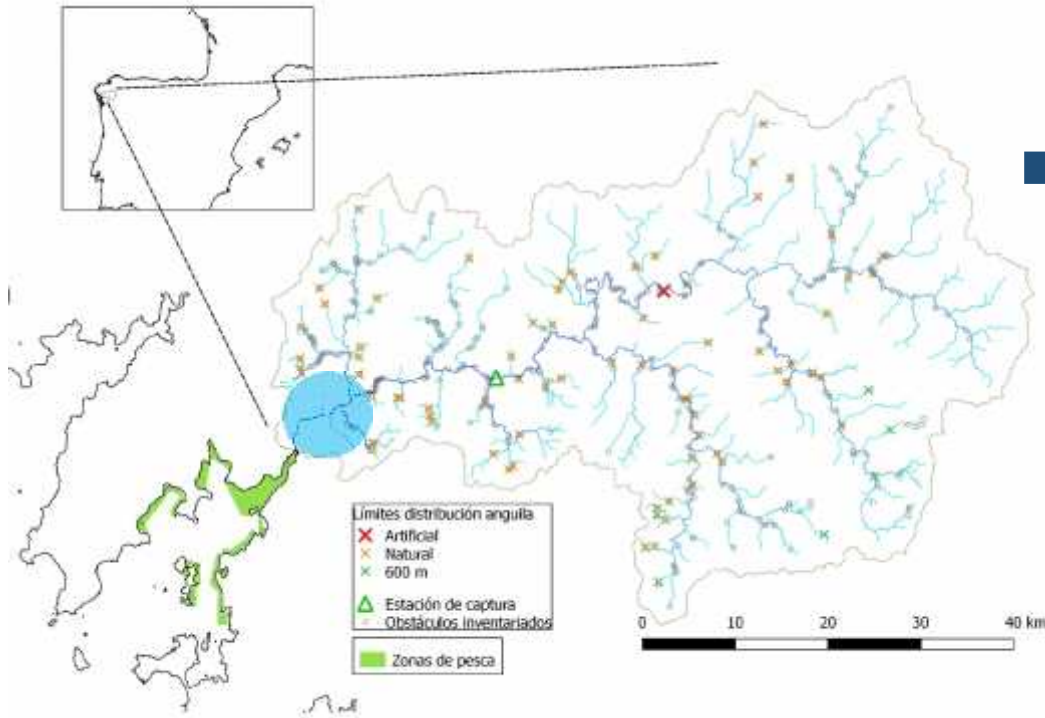
PILOT BASINS - River ULLA

Maria Korta
AZTI

Fernando Tilves Pazos
Subdirección Xeral de Biodiversidade e
de Recursos Cinexéticos e Piscícolas



ULLA



River length - 132 km

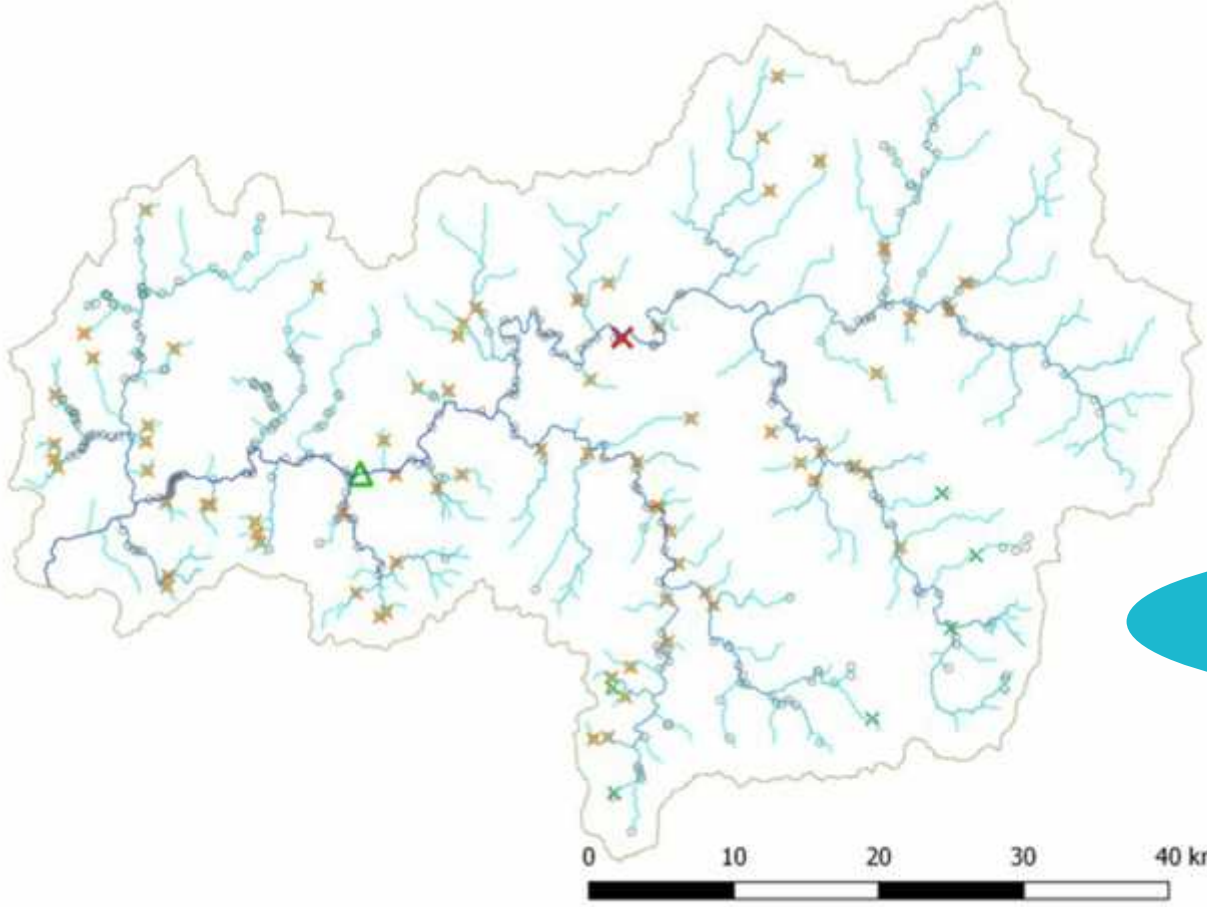
River basin area - 2776 km²

Several tributaries

- River Denza
- River Arnego
- River Pambre
- River Furelos
- River Sar

Estuary length - 7 km

Obstacles to migration



- Obstacle
- △ Sampling station (Ximonde)

Accessible area - 45% of the main river

Obstacles to migration



The eel fishery



	Estuary	River
Glass eels	NO	NO
Yellow eels		
Silver eels		
Glass eels		
Yellow eels	trap	-
Silver eels	-	-

- Only commercial fishing
- Limited number of traps
- Reduced fishing season
- Prohibited glass eel fishing
- Minimum length size
- Obligatory release when any silvering sign



Other pressures on the eel



- Hydropowers
- Contaminants
- Illegal silver eel fishing

Spanish Eel Management Plan:

measures for the objective of 40% escapement



- EMP Galicia.
- Pilot basin EU MAP For Data Collection.

Monitoring



- **Standing stock:**

- Yellow eel: 1990 (multispecific)
2012 (specific)

- **Escapement:**

- Silver eel production: 1999 - now (Ximonde downstream trap)

Monitoring



- Main difficulties:
 - Target species is salmon.
 - Recruitment glass eel: no fishery and lack of interest.
 - Recruitment yellow eel: trap far from the river mouth.
 - No mortality estimation.

Interreg
Sudoe



Project co-financed by the INTERREG SUDOE Programme
through the European Regional Development Fund (ERDF)

www.sudoang.eu