

**Interreg**  
**Sudoe**



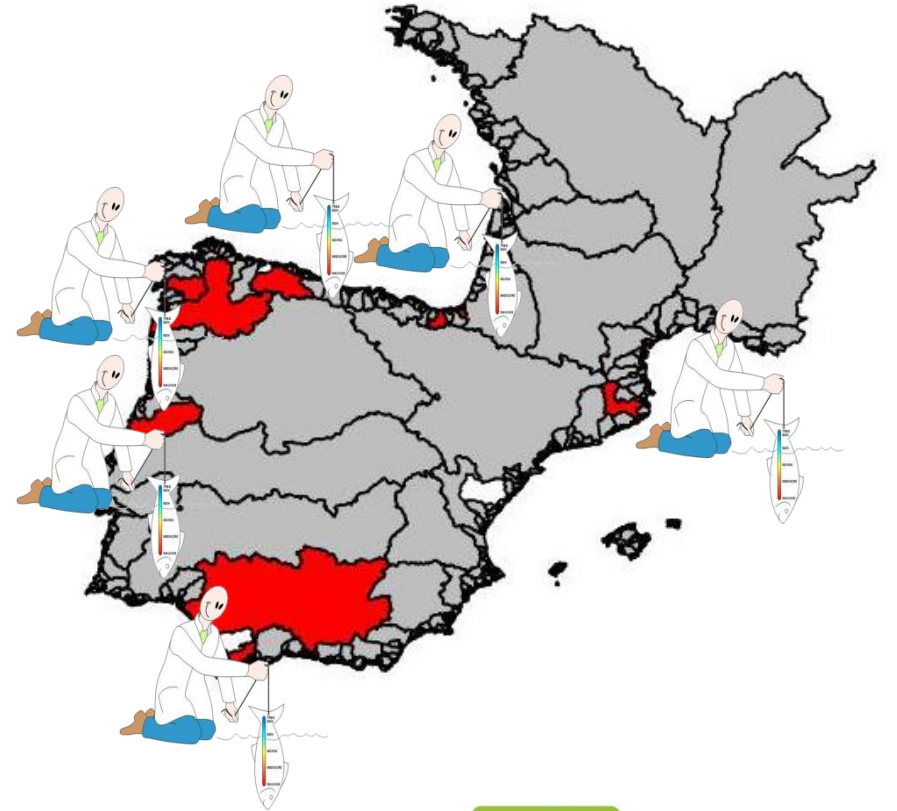
Progress in the  
estimation of  
recruitment (GT3)

Hilaire DROUINEAU  
Irstea



# Objectives

- Tool to estimate recruitment at 3 spatial scales
- With GT6: recruitment in pilot basins





# Objectives

- Tool to estimate recruitment at 3 spatial scales
- With GT6: recruitment in pilot basins
- With GT5: web interactive

INTERACTIVE  
WEB APP (Shiny)  
- GT5 -



**Spatialised  
indicators**





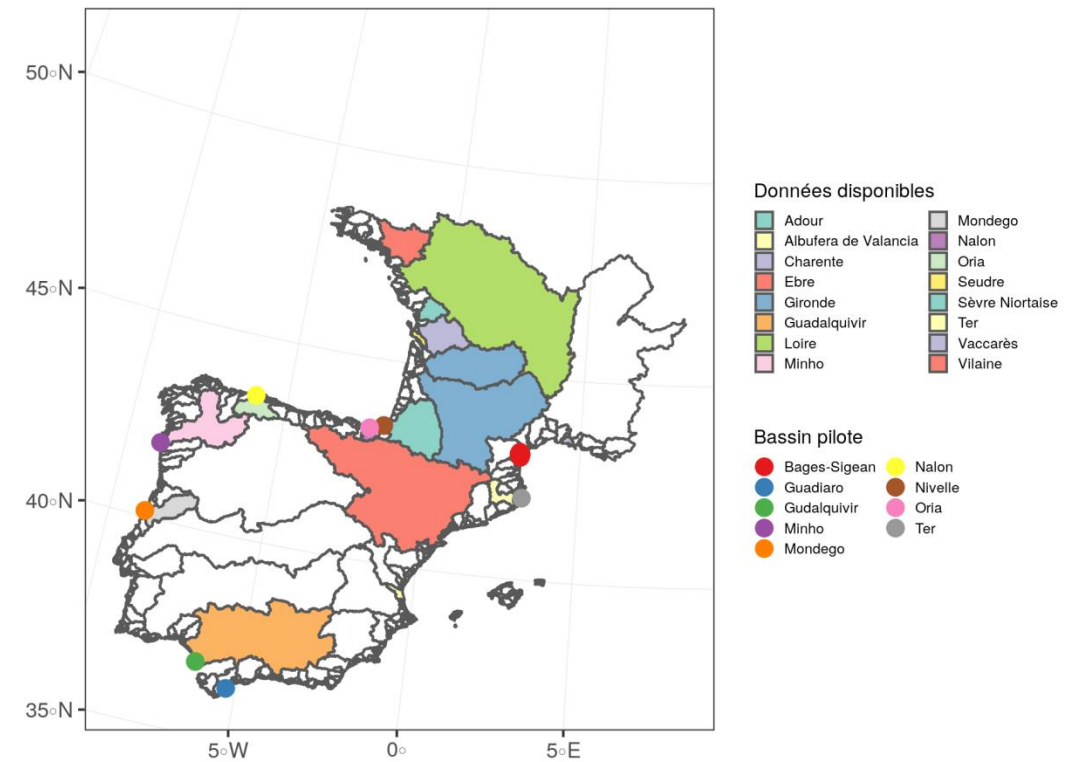
# Main products

- Application of the model GEREM
  - Already applied to France (2016) and most Europe (2018)
  - Contribution to
    - Specific objective: “provide common tools and methods to managers to improve conservation of the eel population”
    - SUDOE objective: “improve cooperation of managers of the SUDOE area”
- Will be included in the interactive web site



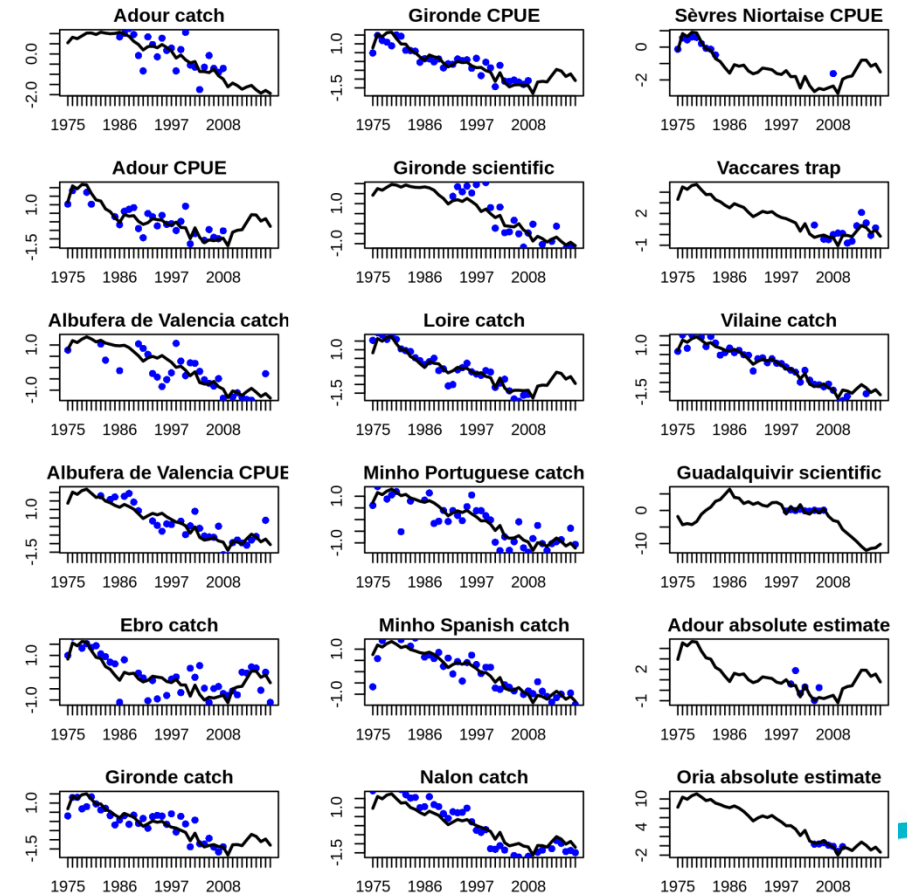
# WHAT HAVE WE DONE SO FAR?

- Collecting available data on recruitment
  - Spatial and temporal resolution



# WHAT HAVE WE DONE SO FAR?

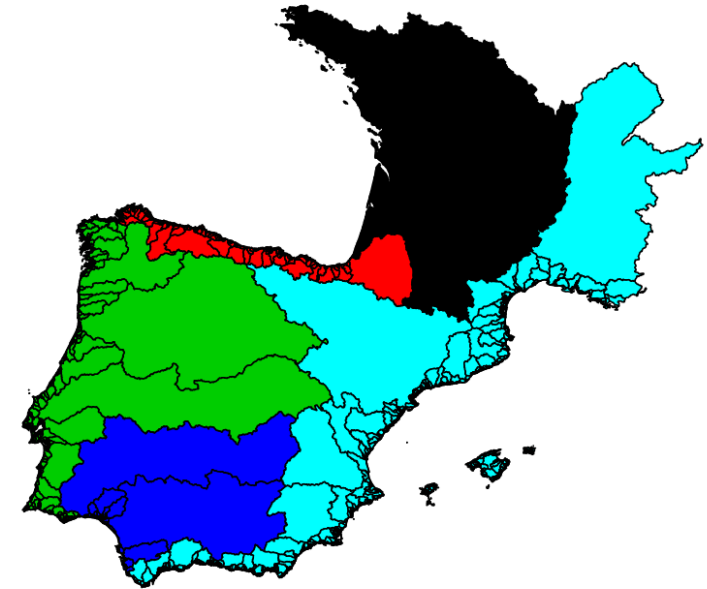
- Collecting available data on recruitment
  - Spatial and temporal resolution
  - Analysis of trends DFA





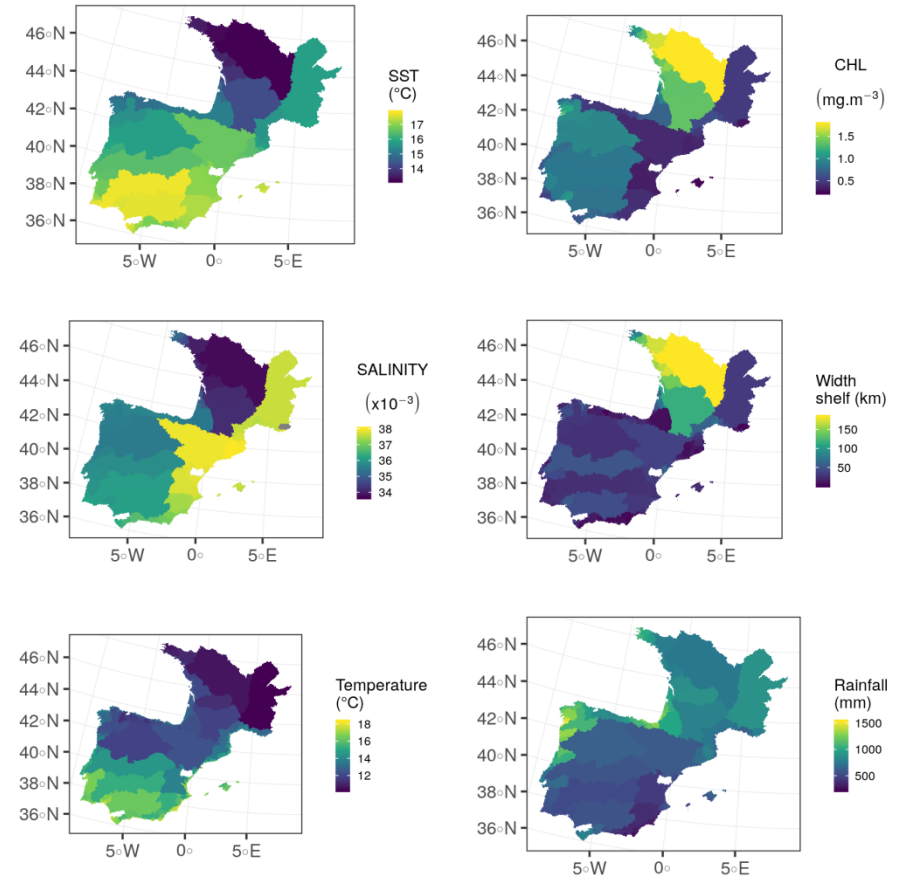
# WHAT HAVE WE DONE SO FAR?

- Collecting available data on recruitment
  - Spatial and temporal resolution
  - Analysis of trends DFA
  - Deliverable E3.1.1
- Zone definition
  - Questionnaires during KoM



# WHAT HAVE WE DONE SO FAR?

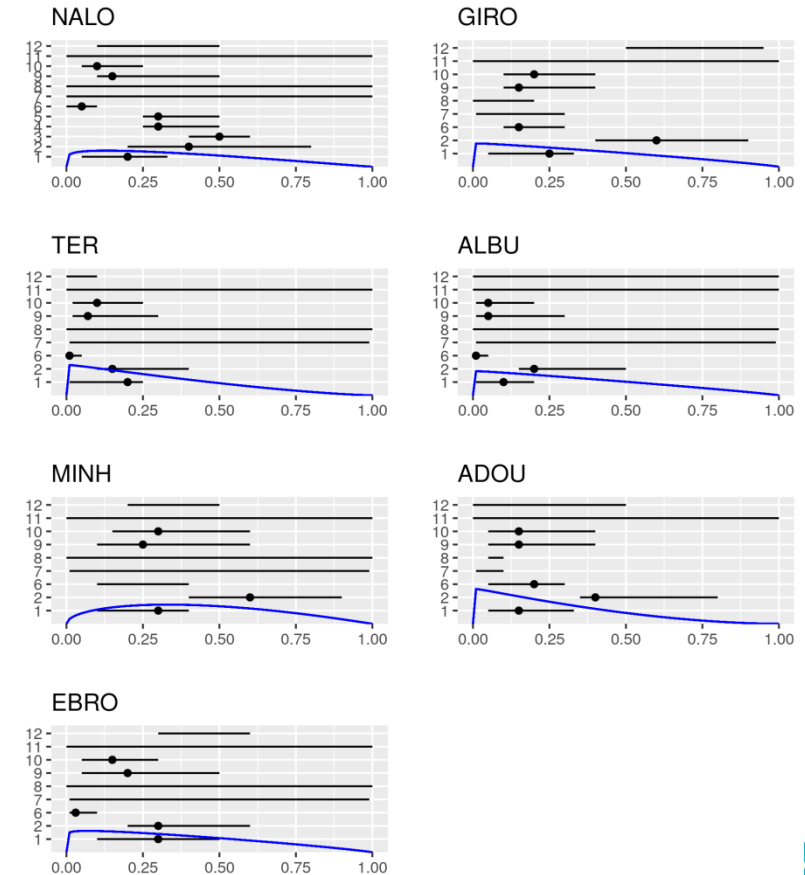
- Collecting available data on recruitment
  - Spatial and temporal resolution
  - Analysis of trends DFA
  - Deliverable E3.1.1
- Zone definition
  - Questionnaires during KoM
  - Exploration of environmental data (basins + coastal)





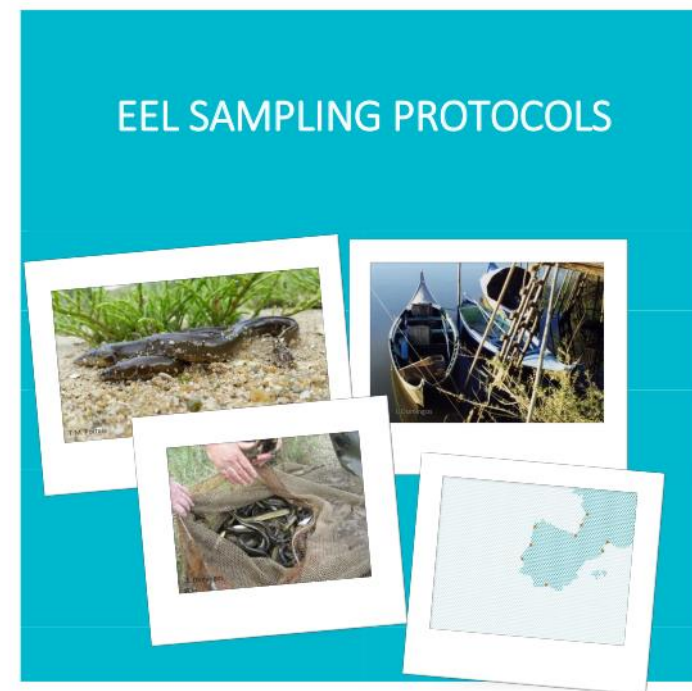
# WHAT HAVE WE DONE SO FAR?

- Do we guess something about exploitation rate?
  - Questionnaire in La Coruna
  - Online questionnaire to all partners



# WHAT HAVE WE DONE SO FAR?

- Do we guess something about exploitation rate?
  - Questionnaire in La Coruna
  - Online questionnaire to all partners
- GT6: protocol in pilot basins
  - Standardized protocol
  - Estimating densities of glass eels



Interreg  
Sudoe



SUDOANG

SUDOANG



# PLAN FOR FUTURE WORK

- Estimating absolute recruitment where possible
  - Update in Oria
  - Still to be done Minho and Ter

Aranburu et al. 2016



# PLAN FOR FUTURE WORK

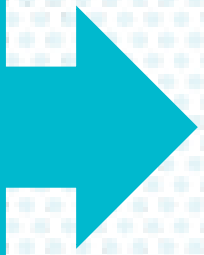
- Estimating absolute recruitment where possible
  - Update in Oria
  - Still to be done Minho and Ter
- Finalizing analyses of questionnaire on exploitation rate
- Running GEREM



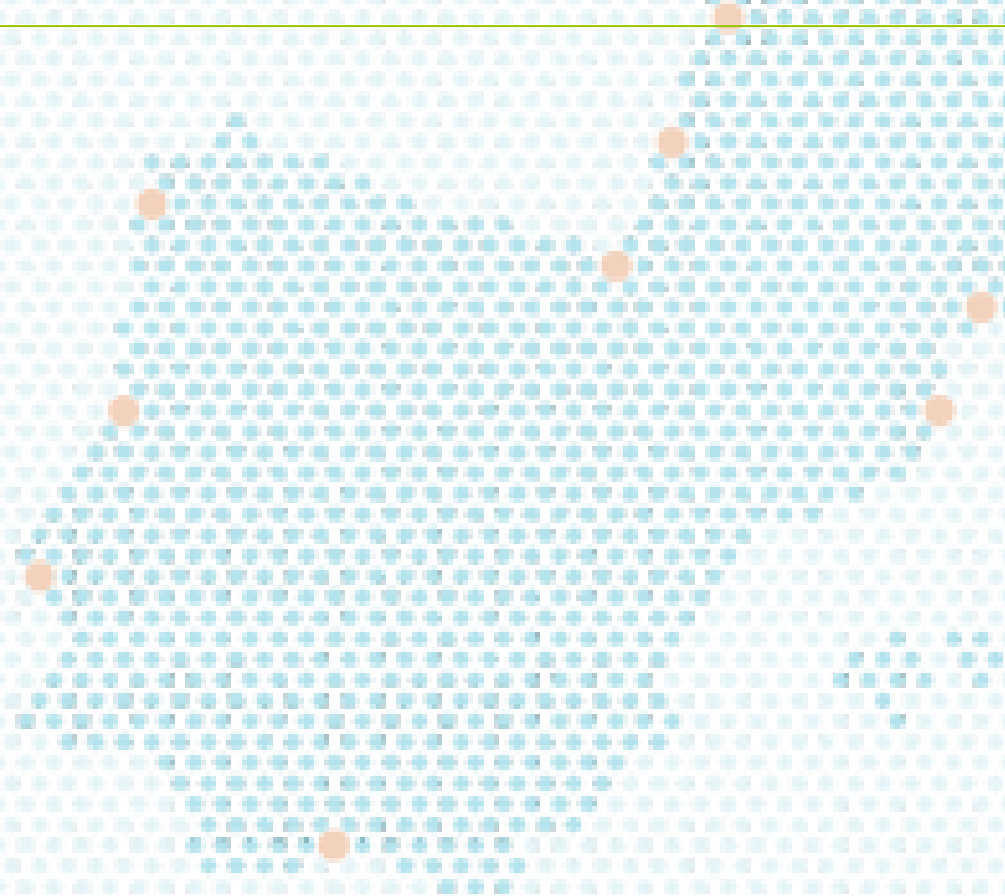
# PLAN FOR FUTURE WORK

- Validation of results
  - Comparison with expert knowledge
  - Comparison with EDA
- Hiring a temporary personal
- Selecting more relevant indicators
  - Workshop in autumn
- Transferring results

~~I AM LATE!!!!~~  
ON TIME!



# QUESTIONS AND COMMENTS



Interreg  
Sudoe



Project co-financed by the INTERREG SUDOE Programme  
through the European Regional Development Fund (ERDF)

[www.sudoang.eu](http://www.sudoang.eu)